

Array mounting system

Widely range of application

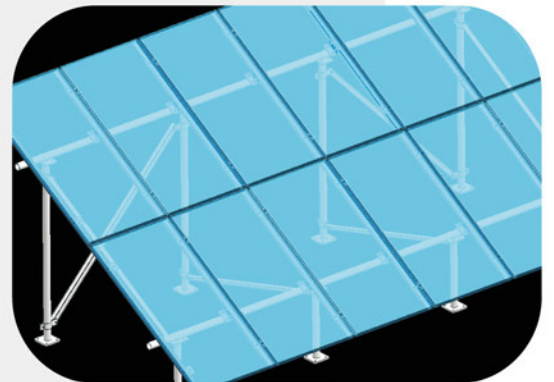
The single pole array system fits various geology environment, includes the ground with gravel.

Cost efficiency of installation

The scientific technical solution of structure, make it easy to install, with no drilling or welding during the whole installation process.

Reliable

The structure is made of hot-dipped galvanized steel, it is strong and oxidation resistant, the wind load is 55m/s, warranty 10 years.



Parameters

Application	Grounding system
Geology enviroment	Any, even with gravel
Material of structure	Stainless steel and anodised aluminium
Module Type	With or without frame
Wind load	55m/s
Snow load	1.4kg/m ²
Warranty	10years

Key components

Pole

Support the structure

Strut beam

Support the tilt angle

Sqaure tube

Install the rail

Rail

Install the module

Block

Fix the rail

