

# Pitch roof mounting system

## Convenient installation

The connection between the rail and the T-bolts makes the installation very convenient, with no drilling or welding. And we can supply varied technical solutions according to the different requirements of customers over round the world.

## Cost efficient

It is cost efficient to install , for our design concept is that we supply the most scientific technical solution and cost efficient structure to the customers.

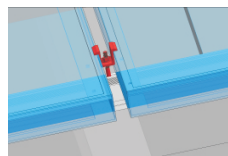
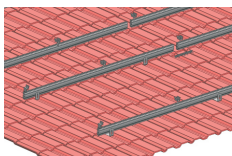
## Reliable

The material of the components is Aluninum 6063-T5, except for the nuts and hook is made of stainless steel, the connection between the rails is a reliable splice bar, which make the hole strcture firmer, the wind resist can reach upto 55m/s, 25 years product life cycle of structure and the worranty is 10 years .



## Parameters

Application	Pitch roof top
Type of rooftop	Tin roof or tile roof
Material of structure	Anodised aluminium and stainless steel
Module Type	With or without frame
Wind load	55m/s
Snow load	1.4kg/m <sup>2</sup>
Warranty	10years
Durable	25years



## Key components

### Rail

the height is 70mm, much stronger and make sure the cooling of system.

### Splice bar

the scientific design, make the connection of the rails firm.

### Inter clamp and end clamp

simple, and easy to install

### L-feet and hook

fixed to the beam, then the rail install on it

### T-bolts

connect to the rail, make installation of whole system much easier

### Water proof accessories :

Eliminates the leakage