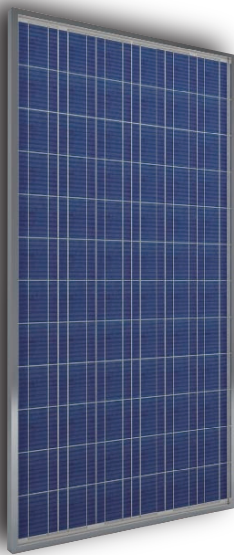


Polycrystalline solar module

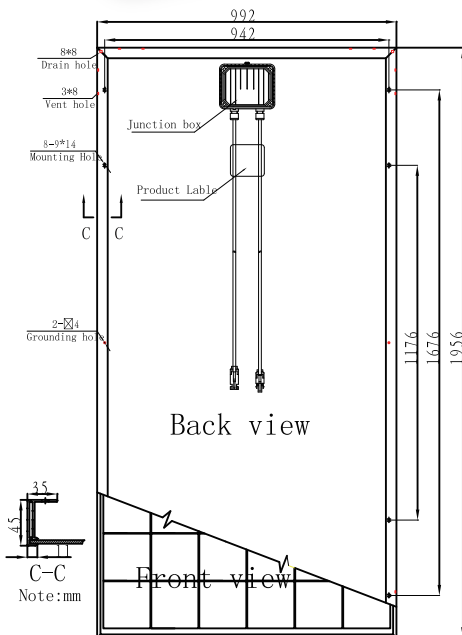
Typical electrical characteristics

Characteristics	ZDNY-270P72	ZDNY-280P72	ZDNY-290P72
Max.Power (Pmax)	270Wp	280Wp	290Wp
Optimum Operating Voltage (Vm)	34.74V	35.28V	35.75V
Optimum Operating Current (Im)	7.78A	7.94A	8.12A
Open-circuit Voltage (Voc)	44.49V	44.75V	45.20V
Short-circuit Current (Isc)	8.31A	8.45A	8.55A
Cell Efficiency	15.4%	16.0%	16.6%

Note: the specifications are obtained under the Standard Test Condition(STC): 1,000W/m² solar irradiance, AM 1.5, Cell Temperature 25 °C



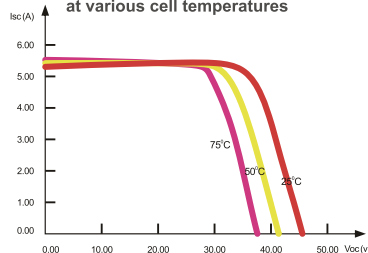
Solar Cell	Poly-crystalline 156x156mm
Output Tolerance (Pmax)	0~+3%
Number of cells	72 cells in series
Module Dimension	1956x992x45mm
Weight	26kg
Max. System Voltage	1000V(TUV)/600V(UL)
Max. Series Fuse Rating	15A
Temperature cycling range	(-40~85 °C)
NOTC	47 °C
Temperature coefficients of Isc	(+0.06%/°C)
Temperature coefficients of Voc	(-0.35%/°C)
Temperature coefficients of Pmax	(-0.4%/°C)
Load Capacity	240pcs/20'GP
	528pcs/40'HQ



Warranty

- 10-year product warranty.
- 12-year warranty at 90% power output.
- 25-year warranty at 80% power output.
- Product enforced by CHUBB Insurance

I-V Curves of PV module ZDNY-270P72 at various cell temperatures



I-V Curves of PV module ZDNY-270P72 at various solar irradiance

